



# OUTER POWELL TRANSPORTATION SAFETY PROJECT

*Project Briefing | February 15*

# INTRODUCTIONS

## Presenters

Dee Hidalgo – ODOT Community Affairs  
Coordinator

Shelli Romero – ODOT Region 1 Area Manager  
– Central (Portland)

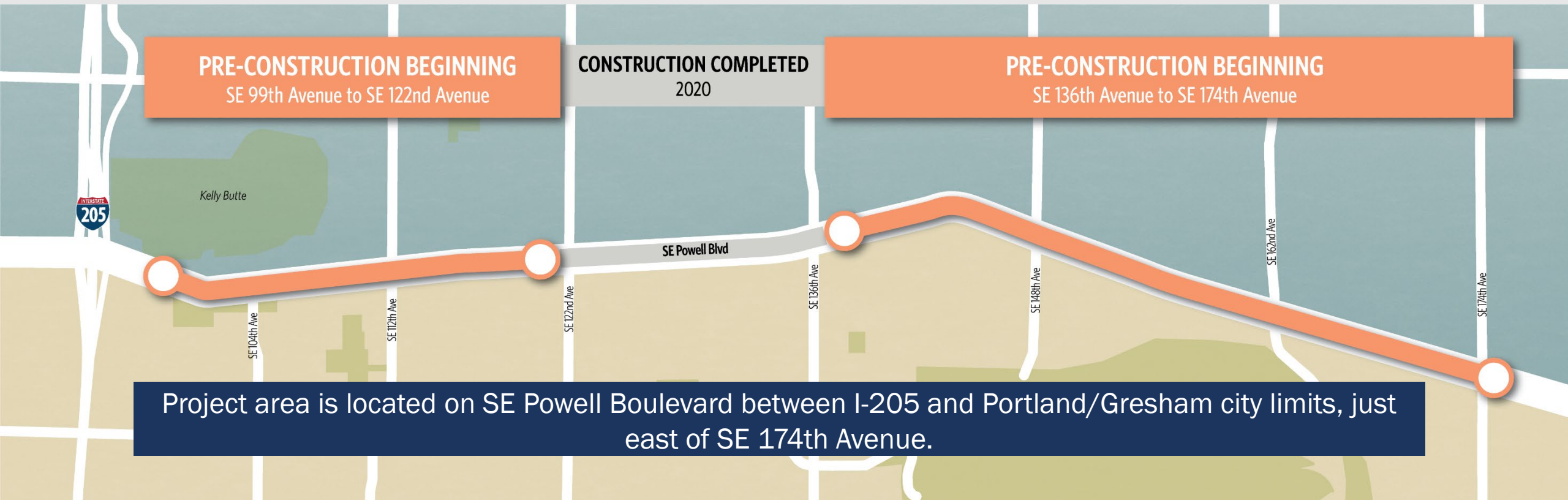
## Team Members

Madison Lindell – HDR Communications Team



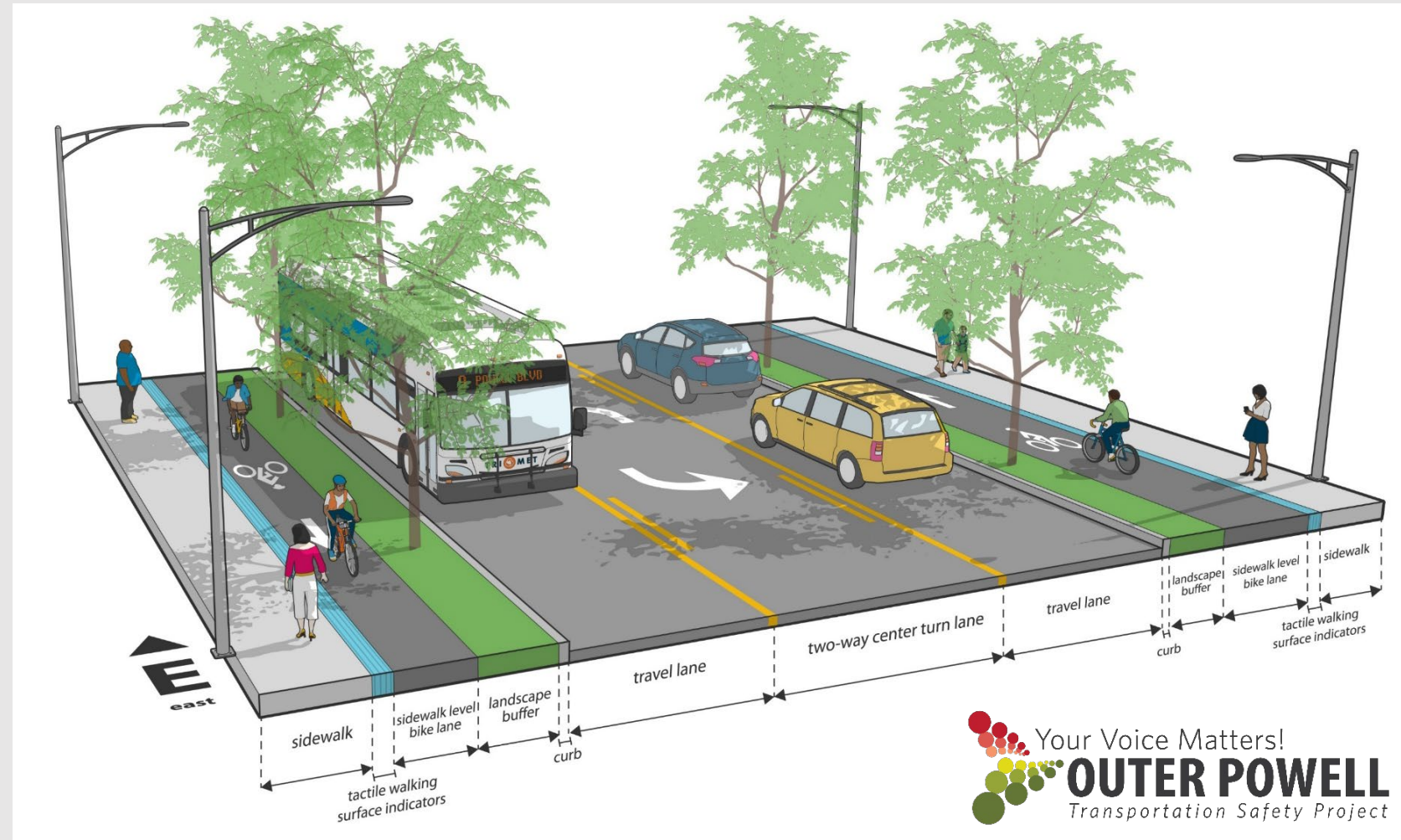
# PROJECT OVERVIEW

ODOT is constructing roadway, bike and pedestrian improvements to help people get around busy Outer SE Powell Boulevard more safely.



# WHAT THE FUTURE ROAD WILL LOOK LIKE

*An example of how Outer SE Powell Boulevard will look after construction. There may be slight differences in specific locations.*

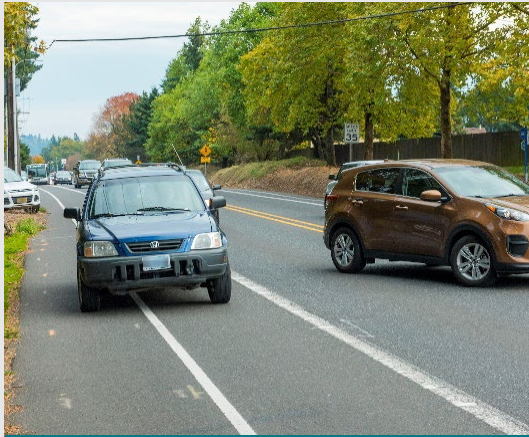


# PROJECT BACKGROUND

- History of community collaboration and support.
- Roadway, bike and pedestrian safety improvements.
- **Phase One** – design and construction funded by the Oregon legislature in fall 2015 and completed in fall 2020.
- **Phase Two** – design and construction funded by Keep Oregon Moving (House Bill 2017); construction begins in late spring 2023 and will last five years.
- Future Jurisdictional Transfer to PBOT.



# CONSTRUCTION COMPLETE: SE 122nd Ave to SE 136th Ave



Before

Roadway and sidewalk conditions prior to construction.



After

Roadway and sidewalk improvements for pedestrians, cyclists and drivers after construction of Phase One.



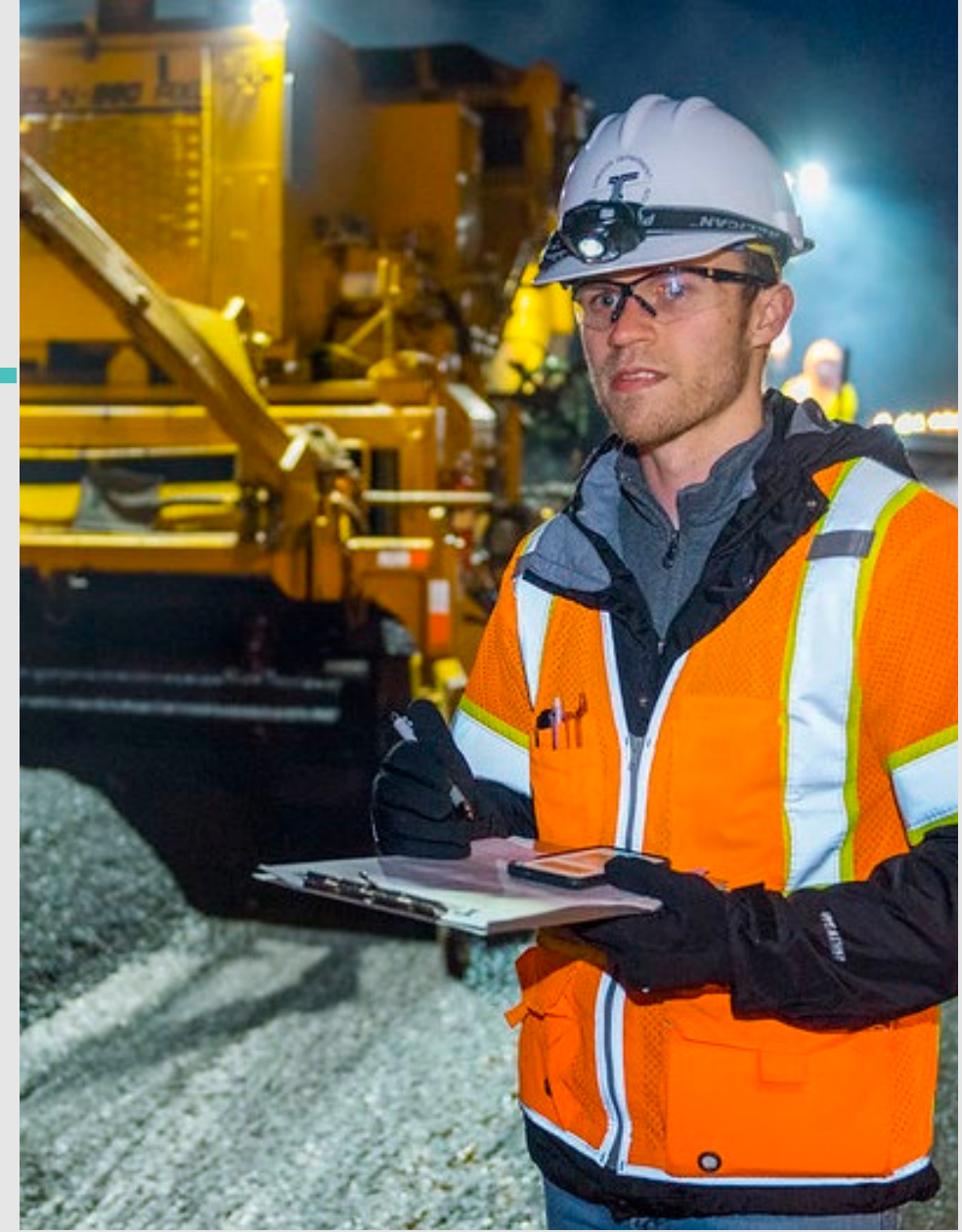
# PRE-CONSTRUCTION ACTIVITIES BEGAN DECEMBER 2022

- Early utility relocation work is necessary to prepare for improvements before construction begins in late spring 2023.
- Work begins with utility relocations (PGE, NW Natural), tree trimming or removal in late 2022 to early 2023.
- Trees will only be removed when necessary and new trees will be planted along the corridor after construction.



# IMPACTS DURING PRE-CONSTRUCTION ACTIVITY

- Periodic travel and bike lane, shoulder and sidewalk closures with detours; temporary bus stops and pedestrian access routes.
- TriMet service continues with modifications.
- Work schedule is designed to minimize traffic impacts:
  - Daytime: 8 a.m. to 5 p.m.
- Those working or living in the area may hear noise related to pre-construction work.
  - 24/7 nighttime noise hotline: **503-276-7803**
  - Nighttime: 9 p.m. to 5 a.m.





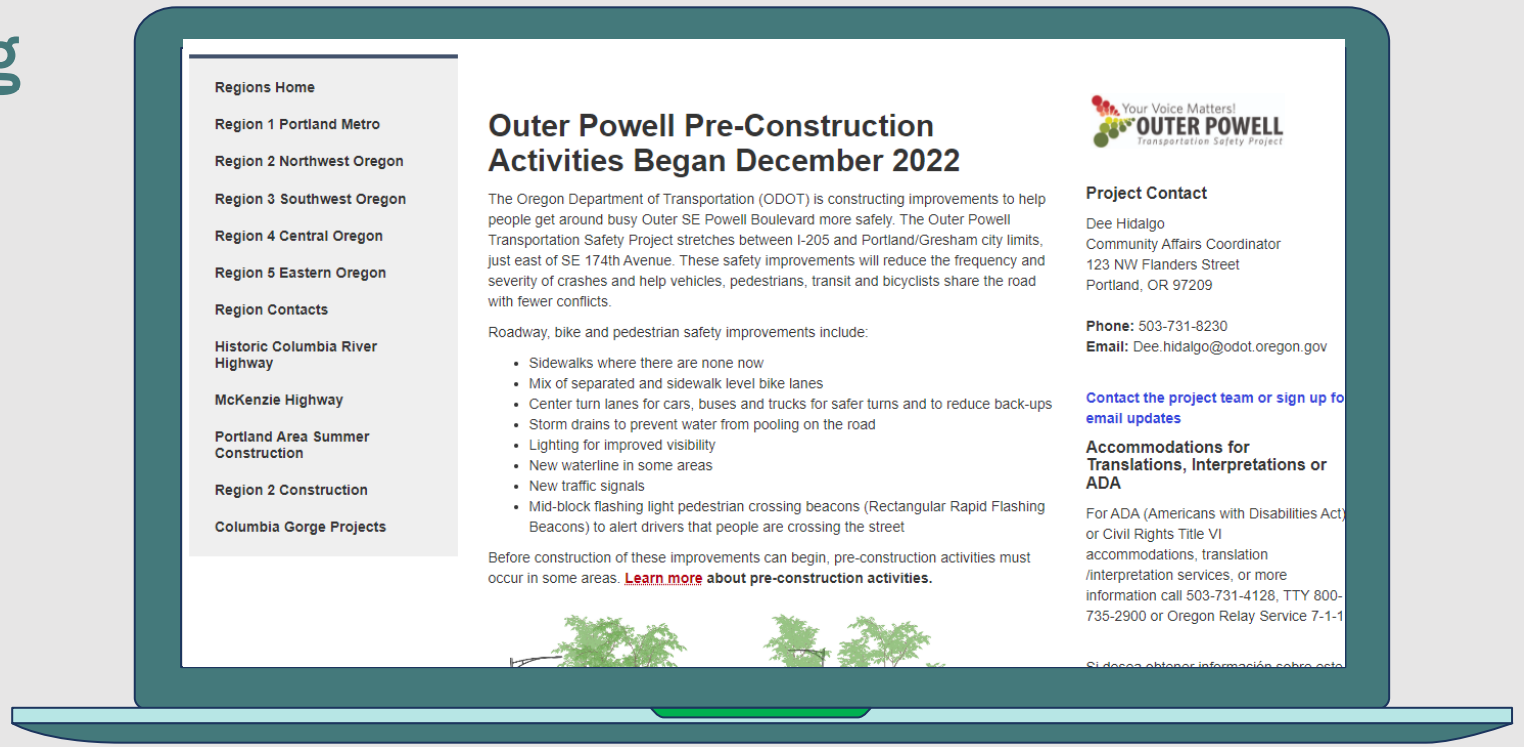
# TIPS FOR TRAVELING SAFELY IN WORK ZONES

- Orange is your cue! Pay attention when you see orange signs, barrels, cones and barricades.
- Obey all speed signs for your safety and the safety of others.
- Expect delays—plan for them—and leave early so you can drive safely through the work zone.



# HOW TO STAY INVOLVED

Visit [OuterPowellSafety.org](https://OuterPowellSafety.org) to learn about the Project, sign up for email updates, attend upcoming open houses, or submit questions and comments.



# QUESTIONS? COMMENTS?

For more information, contact:

Dee Hidalgo, *Community Affairs Coordinator*

[Dee.Hidalgo@ODOT.oregon.gov](mailto:Dee.Hidalgo@ODOT.oregon.gov)

(503) 731-8230